



- Three bedroom Victorian terrace
- Two large reception rooms
- Period and modern features

- Stunning west facing garden
- Plantation shutters and period fireplace
- Modern four piece bathroom

Nestled within the vibrant community of Easton, Bristol, this delightful 3-bedroom Victorian terrace presents a perfect blend of period charm and modern comfort. Thoughtfully renovated in 2014 this home offers a stylish inviting atmosphere for both relaxation and entertainment.

Key Features

Victorian Charm: This high-spec renovation of a much loved family home embraces the timeless allure of Victorian architecture along with modern comforts, this house boasts classic features such as stripped original timber floors, period brickwork, UPVC sash windows, plantation shutters a stunning period fireplace and several rescued and original features.

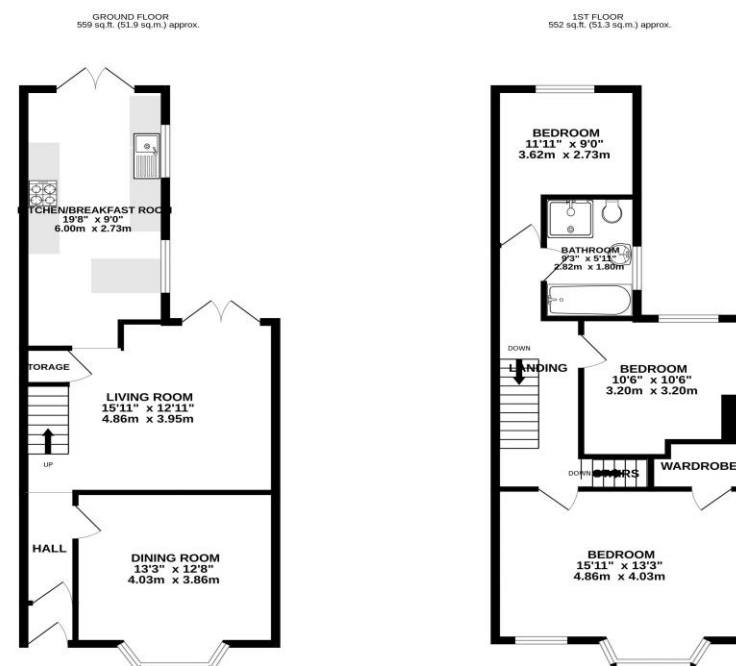
Spacious Living Areas: The ground floor welcomes you with generously proportioned living spaces, including a cozy lounge opening out to exterior decking ideal for unwinding after a busy day. High ceilings and clever, versatile lighting enhance the sense of space, while large windows flood the rooms with natural light, creating an airy feel throughout.

Modern Kitchen: Conveniently connected to the rear reception room with double doors opening onto outside decking and the stunning garden. The modern kitchen is a space where kitchen geeks will appreciate the bespoke granite countertops and sink, ample cabinetry, and built in appliances. Altogether creating an open plan kitchen / garden space perfect for hosting BBS's in summer and underfloor heating for keeping warm in the winter.

Private Outdoor Haven: Step outside to discover a stunning secluded rear garden, perfect for alfresco dining, gardening, or simply soaking up the sunshine. Enclosed by low boundary walls, this west facing garden has a feeling of being part of a community with your neighbours while beautiful trees, with spotlights underneath, offer a sense of privacy and seclusion amidst the bustling cityscape.

Prime Location: Situated in the vibrant neighbourhood of Easton, residents enjoy easy access to an array of local amenities, including shops, cafes, restaurants and parks as well as the cycle path connecting from the city centre to Bath. Excellent transport links provide swift connections to Bristol city centre and beyond, making this an ideal location for commuters and families alike.

This charming Victorian terrace offers an opportunity to own a stunning home, with future development potential, in a popular Bristol postcode. Combined with modern comforts for contemporary and stylish living it boasts characterful features, spacious layout, and a prime location. This property promises a truly exceptional lifestyle experience. Don't miss your chance to make this delightful home your own!



Please note:

1. The photographs may have been taken using a wide angle lens.
2. Any services, heating systems, appliances or installations referred to in these particulars have not been tested and no warranty can be given that these are in working order. Whilst we believe these particulars to be correct we would be pleased to check any information of particular interest to you.
3. We endeavour to make our sales details accurate and reliable, but they should not be relied on as statements or representations of fact and they do not constitute any part of an offer or contract. The seller does not make any representation or give any warranty in relation to the property, and we have no authority to do so on behalf of the seller.
4. Please contact us before viewing the property. If there is any point of particular importance to you we will be pleased to provide additional information or to make further enquiries. We will also confirm that the property is still available. This is particularly important if you are contemplating travelling some distance to view the property.
5. Any floor plans provided are not drawn to scale and are produced as an indicative rough guide only to help illustrate and identify the general layout of the property.
6. Any reference to alterations to, or use of, any part of the property is not a statement that any necessary planning, building regulations, listed buildings or other consents have been obtained. These matters must be verified by any intending buyer.